



Green Lea First School  
'Learn, Explore, Achieve'  
Weekly Newsletter  
20th June 2025



**Dear Families,**

What scorching weather we have had this week! A huge well done to the children who have carried on with their learning regardless. What fun they had in their splashtastic Forest School sessions! A brilliant way to keep cool.

It was lovely to see the Early Years children coming into school as Pirate's on Wednesday embracing one of their Graduate Goals. Next week we have our transition sessions where the children will get to spend time in their next year group and the Year 4's will be visiting their new schools. We just know they will be amazing!

Don't forget our Reserve Sports Day is on Thursday afternoon, fingers crossed for the weather! Have a great weekend and enjoy the sunshine.

Best wishes,

Mrs L Harris

**This week at Green Lea:**

**Class 1**

Class 1 have been making the most of the sunny weather this week. We really had fun on our pirate day. We pretended we were pirates in real boats, decorated some biscuits and even had an ice lolly. Everyone dressed up and looked amazing! We also enjoyed a very wet forest school session where we had lots of fun playing in the water. Our book this week was 10 little pirates and we used our number skills to count backwards and look at numbers. Reception have been doing really well with their phonics and now know lots of sounds and can use them to read words. Remember to share those reading skills at home with your grown ups.

**Class 2**

The mathematicians in The Outstanding Owls have continued to learn about time; Year 2 to the nearest 5 minutes and Year 1 have learnt o'clock and half past. In English we made our aliens that we are going to write a story about. In the story 'Man on the Moon' Bob says that there is no such thing as aliens, but we are going to prove him wrong! The Historians in Class 2 have continued to learn all about Stafford Castle, its features, who lived there and the timeline. Here is the link to Stafford Castle. [Stafford Castle and Visitor Centre | Stafford Borough Council](#)

**Class 3**

In Maths, the Year Three children have learnt about digital time and the Year Four children have learnt about the 24-hour clock. Here is a useful website: [12 and 24 hour clock - KS2 Maths resources for Year 3 - BBC Bitesize](#). In English, the children have started reading *Escape from Pompeii* as they are going to write a setting description. They have looked at an example of one as well as learnt what happened in Pompeii. In History, the children have learnt about Josiah Wedgwood and why he was significant as well as what it was like to work in the pottery industry if you were a child, a woman or a man.

**Upcoming Key Dates**

- Transition Days 23rd—24th June
- Sports Day 26th June from 1.15pm
- Summer Fair 27th June 3.30pm—5.30pm

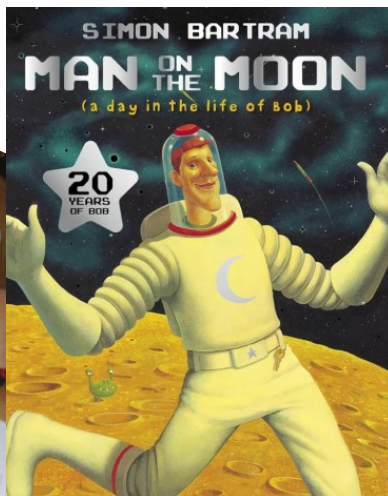
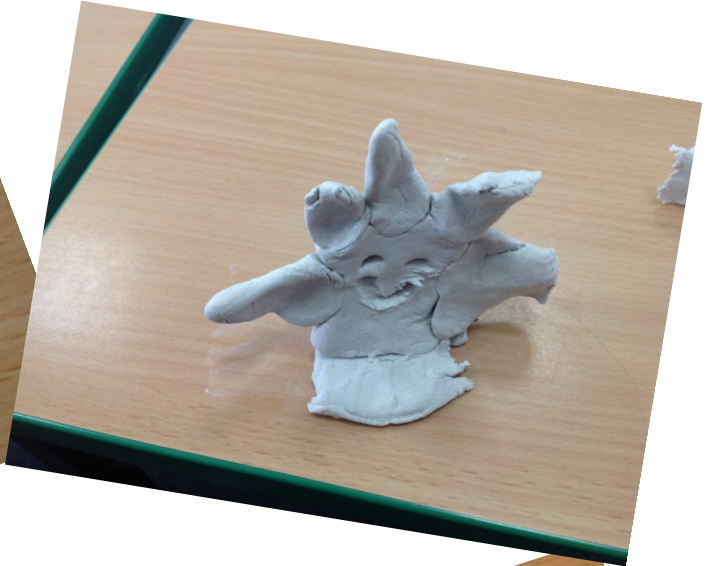
# 'Learn, Explore, Achieve'

Early Years Pirate Day! They had a great time sailing the Seven Seas, finding treasure, decorating biscuits and even enjoyed an ice lolly.



# 'Learn, Explore, Achieve'

Class 2 created their own alien from modelling clay. He arrived on Earth by hiding in Bob's spaceship.





FoGL and Team Green Lea  
Host Our Annual



# SUMMER FAIR



Friday 27th June  
3.30pm till 5.30pm

Join us in the  
School Grounds



Games • Inflatables  
Raffle • Food • Cakes  
& Lots More

This is a cash only event - please bring lots of change

# What Parents & Educators Need to Know about EMOJIS

## WHAT ARE THE RISKS?

Emojis are more than playful expressions — they form a fast-evolving digital language that many adults struggle to decode. For young people, this 'secret code' is central to how they communicate identity, humour and emotions. With over 5 billion emojis sent daily on Facebook Messenger alone, understanding these symbols is key to engaging meaningfully with digital youth.



### GENERATIONAL MISCOMMUNICATION



An emoji like 👍 (thumbs up emoji) might seem friendly to adults, but teens often interpret it as sarcastic or passive-aggressive. These differing interpretations can create confusion or unintended tension in cross-generational conversations.

### SHIELDING BULLYING OR PEER PRESSURE



When embedded in emojis, mean-spirited jokes or exclusionary language can fly under the radar. Terms like 'mid' or 'delulu' may seem harmless, but they can be used to undermine peers in subtle ways.

### RAPIDLY SHIFTING MEANINGS

Emoji meanings can change overnight. A person standing emoji (🧑) once signified awkwardness but might now be repurposed for something entirely different. This ever-changing lexicon can leave adults in the dark and young people vulnerable to misunderstanding or misuse.

### MASKING DISTRESS OR HARM



Some emojis are used to discreetly signal troubling behaviours. For instance, 🍂 (falling leaves emoji) or 💊 (pill emoji) might suggest drug use, while 🌸 (wilted flower emoji) could hint at emotional struggles. Such usage can obscure serious issues, making them harder for trusted adults to detect.

### NORMALISING RISKY BEHAVIOURS

Emojis can make harmful actions seem light-hearted or fashionable. Strings like 🔥👀 (fire + 'woozy' face + pill emojis) may appear humorous but can reference partying, intoxication or dangerous challenges, which might otherwise raise red flags.

## Advice for Parents & Educators

### LEARN THE LINGO



Stay updated with emoji trends and definitions using resources like [emojipedia.org](http://emojipedia.org) or Urban Dictionary. Knowing current meanings builds confidence when engaging with young people and helps spot potential concerns early.

### CREATE SAFE SPACES FOR DISCUSSION



Encourage casual chats about emojis, online slang, memes, or social media trends. Showing interest without judgement reassures young people that they can talk about their digital world openly and safely.

### ASK, DON'T ASSUME



Approach unfamiliar emojis with curiosity rather than suspicion. A light-hearted "What does 🍷 (juice box emoji) mean these days?" can open conversation and show that you respect their knowledge.

### PRIORITISE TRUST OVER SURVEILLANCE



While parental controls and monitoring tools can be useful, emotional safety matters most. Be someone children and young people feel they can come to — not just someone who's watching them.

## EMOJI CHEAT SHEET - The following slang terms and emojis are some common examples — please be aware this isn't an exhaustive list.

### COMMON EMOJIS:

- 🤡 (Clown face) Foolishness or clowning around
- 😏 (Pleading face) Over-affectionate or 'simping'
- 😬 (Cold face) Cool, stylish or ruthless
- 👁️ (Eyes) Watching drama unfold
- 😘 (Hot face) Intense attraction or excitement
- 🐐 (Goat) Greatest of all time (G.O.A.T.)
- 🙄 (Moa) Stone-faced, unbothered
- 💅 (Nails) Confidence, sassiness, or indifference
- 👑 (Crown) 'Slaying', as in doing great
- 🚩 (Triangular flag) Red flag; a warning sign about someone's behaviour

### POTENTIALLY CONCERNING EMOJIS

- 🍌 (Ear of corn) Slang for pornography (avoids censorship algorithms)
- 🌸 (Wilted flower) Often used to convey emotional struggle or sadness
- ❄️ (Snowflake, snowman, snow cloud) Can symbolise cocaine
- 👁️👁️ (Snake) Can represent betrayal or being 'two-faced'
- 🗝️ (Key, lying face) Related to cocaine use
- 🔫 (Water pistol) Sometimes used to reference violence or self-harm
- 🍃 (Falling leaves, herb, maple leaf) Can symbolise cannabis
- ⚠️ (Warning) Used to emphasise drama, threats or emotional turmoil
- 💊 (Pill) May reference drug use or prescription misuse
- 🍜 (Steaming bowl) Refers to nudes ('noods' is an abbreviation of noodles)

### Meet Our Expert

Keith Broni is a globally renowned emoji expert and the Editor in Chief of [emojipedia.org](http://emojipedia.org), the world's number one emoji resource. He has an MSc in Business Psychology from University College London and an MBA from Quantic School of Business and Technology.



The National College

## Early Education and Childcare Staffordshire



### Have your say

Are you the parent of a child under 5 or a parent to be?

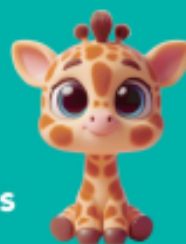
Have your say on childcare in Staffordshire

Please complete our childcare survey for 2025 by visiting the link below  
or scan the QR code. Have your say now!

<https://tinyurl.com/yx5pzz6m>



You could be  
entitled to help  
with childcare costs



Visit [staffordshire.gov.uk/fundedchildcare](https://staffordshire.gov.uk/fundedchildcare)



**Green Lea First School**  
 'Learn, Explore, Achieve'  
**Summer Term Key Dates and Events**

April	May	June	July
<ul style="list-style-type: none"> <li>• <b>Monday 28<sup>th</sup></b> Return to School - Summer Term</li>   <li>• <b>Tuesday 29<sup>th</sup></b> Year 4 Families Multiplication Screening Check Meeting &amp; Year 1 Families Phonic Screening Check Meeting 3.30pm and 5pm</li> </ul>	<ul style="list-style-type: none"> <li>• <b>Monday 5<sup>th</sup> -</b> Bank Holiday</li>   <li>• <b>Week Beginning</b> 26<sup>th</sup> May Half Term</li> </ul>	<ul style="list-style-type: none"> <li>• <b>Monday 2<sup>nd</sup></b> INSET DAY</li>   <li>• <b>Week</b> Beginning 9<sup>th</sup> Father's Day Forest School Class One (10<sup>th</sup> June) 2.15-3pm Class Two (11<sup>th</sup> June) 2.15-3pm Class Three (12th June) 2.15pm -3pm</li>   <li>• <b>Friday 20<sup>th</sup></b> Sports Day 1.15pm Thursday 26<sup>th</sup> <u>Reserve Sports</u> <u>Day</u></li>   <li>• <b>Friday 27<sup>th</sup></b> Summer Fayre 3.30pm - 6pm</li> </ul>	<ul style="list-style-type: none"> <li>• <b>Tuesday 15<sup>th</sup></b> Nursery Graduation 2.30pm</li>   <li>• <b>Thursday 17<sup>th</sup></b> Year 4 Graduation 9.15am</li>   <li>• <b>Friday 18<sup>th</sup></b> Last Day of Summer Term 2025</li> </ul>



## Term Dates & Inset Days 2024-2025

### Autumn Term 2024

Inset Days: Monday 2<sup>nd</sup> September and Tuesday 3<sup>rd</sup> September

Term Starts: Wednesday 4<sup>th</sup> September

Holiday: Monday 28<sup>th</sup> October - Friday 1<sup>st</sup> November

Inset day: Monday 4<sup>th</sup> November

Term Ends: Friday 20<sup>th</sup> December

Holiday: Monday 23<sup>rd</sup> December - Friday 3<sup>rd</sup> January

### Spring Term 2025

Inset day: Monday 6<sup>th</sup> January

Term Starts: Tuesday 7<sup>th</sup> January

Holiday: Monday 17<sup>th</sup> February - Friday 21<sup>st</sup> February

Term Ends: Friday 11<sup>th</sup> April

Holiday: Monday 14<sup>th</sup> April - Friday 25<sup>th</sup> April

### Summer Term 2025

Term Starts: Monday 28<sup>th</sup> April

May Day: Monday 5<sup>th</sup> May

Holiday: Monday 26<sup>th</sup> May - Friday 30<sup>th</sup> May

Inset Day: Monday 2<sup>nd</sup> June

Term Ends: Friday 18<sup>th</sup> July

Inset Day: Monday 21<sup>st</sup> July