



# Subject Specific Vocabulary

# LKS2 Spring Cycle A Science Knowledge Organiser Plants Concepts: function, growth

**Roots**

Anchor a plant in place. The roots also absorb water and nutrients from the soil.

**Pollination**

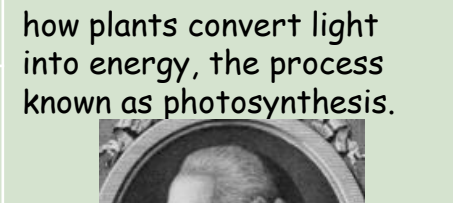
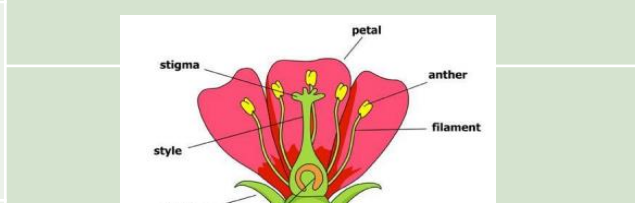
Pollination is the transfer of pollen from an anther of a plant to the stigma of a plant

Plants make their own food in their leaves to provide them with energy, growth, repair and reproduce. Leaves absorb sunlight and carbon dioxide.

**Famous Scientist**  
Jan Ingenhousz (December 8, 1730 - September 7, 1799) was an 18th century Dutch physician, biologist, and chemist who discovered how plants convert light into energy, the process known as photosynthesis.

**Seed dispersal**

Seed dispersal is the movement, spread or transport of seeds away from the parent plant.



**Life cycle**

Stages of a flowering plant.

The plant makes its food from water and carbon dioxide, using sunlight as energy, in the green parts of plants (mainly leaves).



Flowering plants have evolved specific parts to carry out pollination, fertilization and seed growth.



Seed dispersal improves chances of enough seeds germinating and growing to mature.